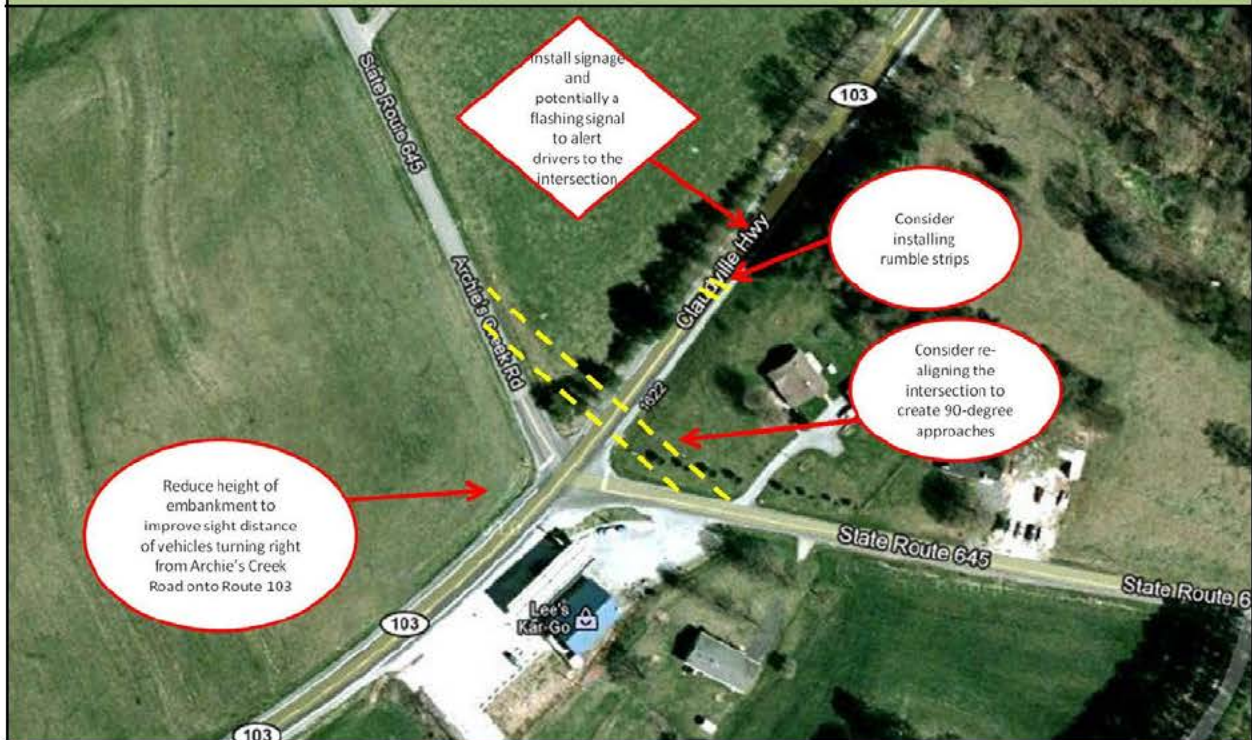


Hatcher's Chapel Road (VA 645), Archie's Creek Road (VA 645), and Claudville Highway (VA 103)



Deficiencies:

- Traffic turning left from Archie's Creek Road onto Route 103 has very limited sight distance due to a large dip in Route 103 east of the intersection; this has resulted in past traffic accidents with traffic traveling westbound on Route 103.
- An embankment on the northwest side of the intersection limits sight distance for traffic turning left from Archie's Creek Road onto Route 103 or going straight through the intersection to Hatcher's Chapel Road.
- Archie's Creek Road and Hatcher's Chapel Road intersect Route 103 at angles.
- Note: According to the *2008 Summary of Crash Data* published by the Virginia Department of Transportation (VDOT), Route 103 in Patrick County experienced 24 total vehicular accidents, representing an accident rate of 192 accidents per 100 million vehicle miles traveled.

Hatcher's Chapel Road (VA 645), Archie's Creek Road (VA 645), and Claudville Highway (VA 103)



Left: Looking east along Route 103 from Archie's Creek Road. This photo illustrates a dip in Route 103 which significantly limits sight distance of westbound vehicles along Route 103 from Archie's Creek Road.

Right: Looking west from Archie's Creek Road along Route 103. This photo illustrates an embankment which limits sight distance of eastbound traffic along Route 103 from Archie's Creek Road.



Recommendations:

Short-term improvements

- Signage, perhaps in conjunction with a flashing signal and rumble strips, should be installed on Route 103 east of the intersection to alert drivers to the intersection.
- The embankment on the northwest side of the intersection should be lowered to improve sight distance for vehicles turning right from Archie's Creek Road onto Route 103.

Long-term improvements

- Realign the intersection to create 90-degree approaches, thereby creating a perpendicular intersection.